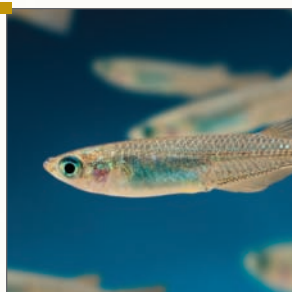




Danio rerio



Oryzias latipes



Each **Benchtop System** includes an unconditional **2-year warranty** and **24/7 emergency support**.

Benchtop System

Features

Superior Design

- Oversized, 5-stage, state-of-the-art filtration ensures optimal water quality.
- Low water level safety shut-off and alarm with optional programmable logic controller (PLC) control panel.
- Heavy-duty, 316L stainless steel frame with leveling feet.

Convenience

- Filter and UV bypass allow you to service units while still running system.
- Automatic water exchange saves time and reduces labor.
- Central PLC control panel (optional).

Flexibility

- Two- to three-shelf models available.
- Ergonomic, autoclavable polycarbonate tanks (1.5-, 3.0- and 10.0-liter sizes), lids and baffles.



2395 Apopka Blvd • Apopka, FL 32703 • Toll Free: 877.900.AHAB • Local: 407.886.7575
398 Essex St • Beverly, MA 01915 • Toll Free: 888.624.8265 • Local: 978.927.8720
Web: AquaticHabitats.com • Email: Habitats@AquaticEco.com

Benchtop System

Specifications

Water

- Culture volume: 150 liters (40 gal)—74 liters (19.5 gal) as shown.*
- Zebrafish holding capacity @ 10 adult fish/liter: 1,500 fish—1,000 as shown.*
- Total water volume: 225 liters (59 gal)—135 liters (35 gal) as shown.*
- 6 tank water exchanges per hour.

Electrical**

- 120V/10.25 A/50 or 60 Hz
- 240V/5.1 A/50 or 60 Hz

Filtration

- 1st Stage: 120-micron filter pad.
- 2nd Stage: Combined moving and submerged-bed biological filtration (over 32 m² of surface area).
- 3rd Stage: 50-micron filter cartridge.
- 4th Stage: Activated carbon adsorbs volatile organics and other contaminants.
- 5th Stage: UV disinfection dose of 110 mJ/cm² at beginning of lamp life.

Other

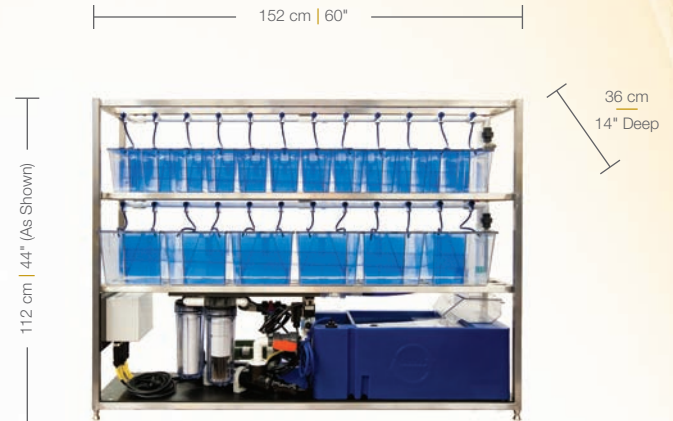
- 300-watt heater maintains temperature differential of 5°C.
- Supplemental aeration and degassing.
- Weight with water: 195 kg (430 lbs).

Options

- YSI® 5200 automated water quality monitor/control/alarm system (see "A").
- Individual photoperiod control for each shelf.
- The Sentinel total gas pressure monitor/controller (see "B").
- Breeder tanks (see "C").
- Baby baffles for larval rearing.
- Powder-coating.

*All shelves on rack shown will hold 1.5- and 3.0- tanks and 10.0-liter tanks.

**Amp load will vary with optional equipment; 20-A duplex receptacle with use of power box.



A. YSI® 5200 Water Quality Monitoring System

The YSI® 5200 RSM has set new standards for versatility and reliability. Designed for applications that require real-time monitoring, it measures dissolved oxygen, pH, ORP, conductivity, salinity and temperature! Also a controller and alarm system.



B. The Sentinel Total Dissolved Gas Monitor

The Sentinel, a state-of-the-art total dissolved gas monitoring and controlling system, will prevent gas bubble disease from interrupting your valuable studies. Continuously scans for unsafe conditions and automatically shuts down system if necessary. Can trigger local or remote alarms.



C. Breeder Tanks

Our breeder tanks are made from autoclavable, FDA-approved polycarbonate. Set up for spawning on or off system.



Total Dissolved Gas Pressure (TGP) Meter

As little as 103% TGP can be lethal. This meter provides rapid and accurate readings of TGP in mmHg or

% saturation. It also measures delta P (TGP-BP), barometric pressure (BP, in mmHg) and temperature (°C). It has simple calibration menus and easy-to-understand operational menus. Digital display has user selectable backlight. Probe includes a 5-m (16 ft) cable.



EcoSense® pH100

Measure pH and temperature (ORP requires separate probe) quickly and accurately. The electrode offset recognition function

displays electrode efficiency and indicates when to replace the pH electrode. Features include internal buffer recognition, auto/manual temperature compensation and a large LCD display that simultaneously displays pH or mV and temperature (°C only).



EcoSense® pH/Temp Pen

Easy one-hand operation—measure pH 0 to 14 with an accuracy of ± .02. Has a 50-set memory; IP67 waterproof

housing; ATC; auto-buffer recognition with 1-, 2- or 3-point calibration; and a replaceable electrode. "Hold" feature locks reading on display, which has on-screen instructions. Has a belt clip and lanyard on the back and floats if dropped in water.